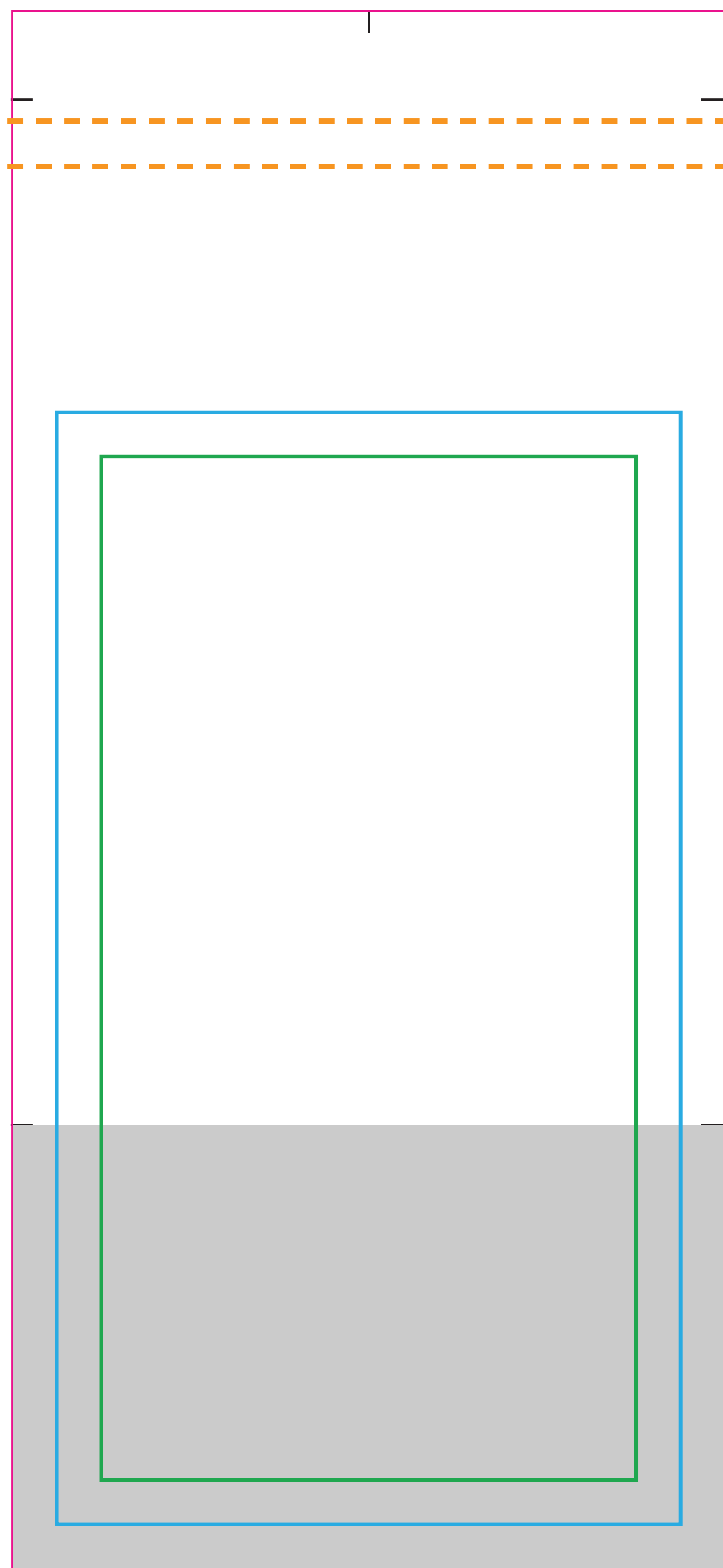
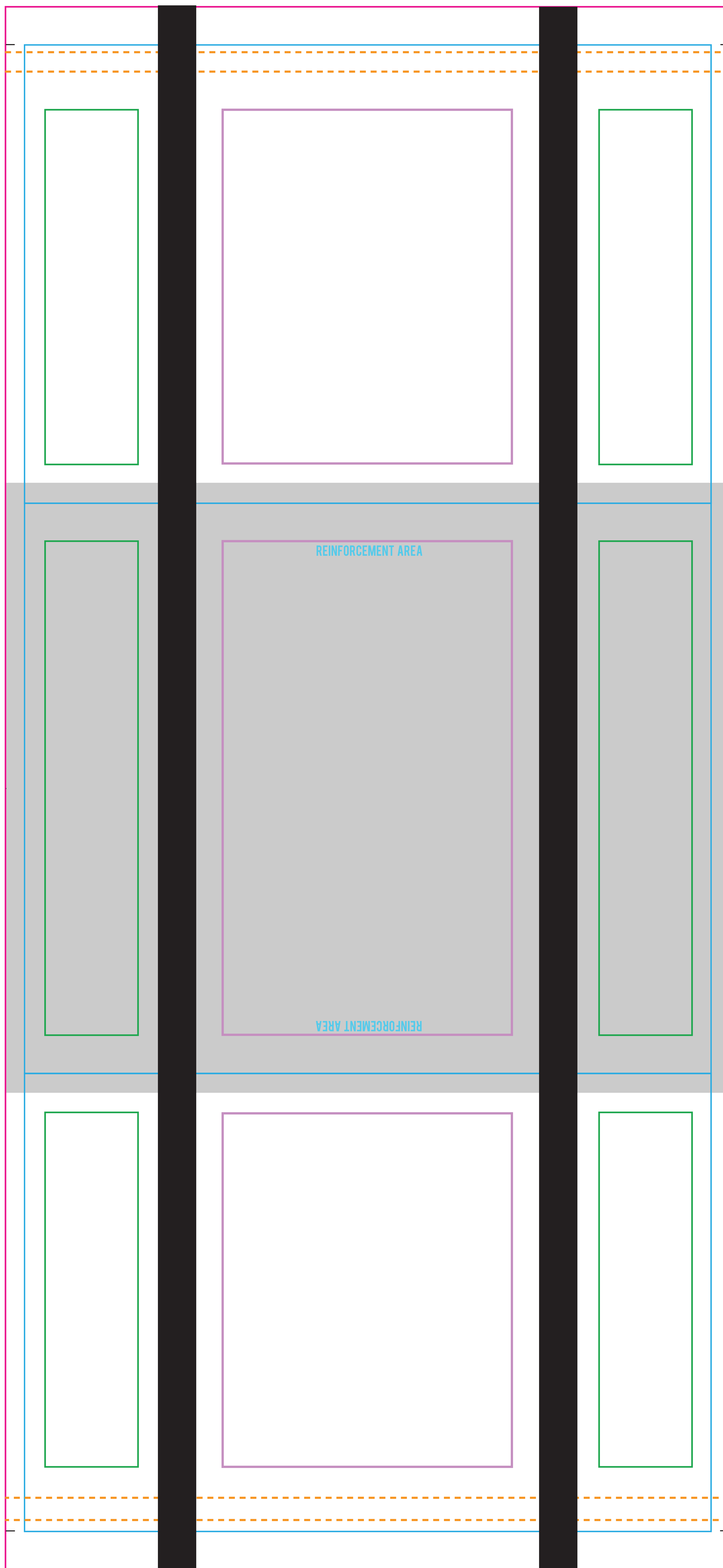


GUSSET 1



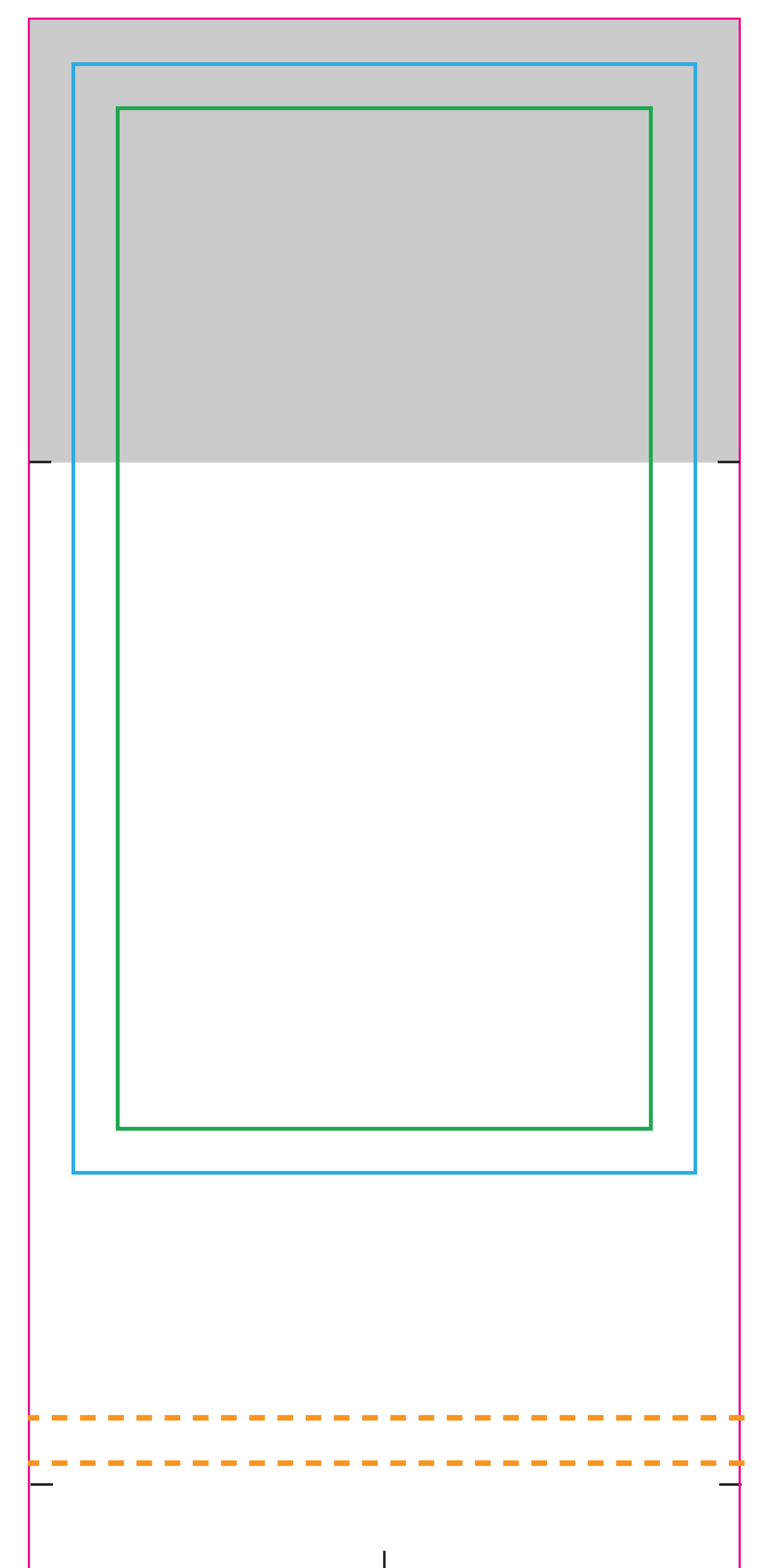
FRONT



BOTTOM GUSSET

BACK

GUSSET 2



- ACTUAL SIZE ————
- BLEED AREA ————
- TEXT SAFE AREA ————
- LOGO PLACEMENT ————
- SEWN AREA - - - - -
- PRODUCTION LINES - - - - -

Artwork must be in vector format or if any images are used for art, it should be at 300 dpi or higher to fit actual product size.

LUX-GT5 TEMPLATE

LARGE FULL SIDE GUSSET LUXURY TOTE

Imprint Methods: Sublimation

Product Size: 18"W x 16"H x 7" D

Bleed Size for Front & Back: 19"W x 41"H

Bleed Size for Sides + Gussets: 8"W x 17.5"H